



GAT MONTHLY MEMBERSHIP PROGRESS REPORT

Results as of: 2/28/2023

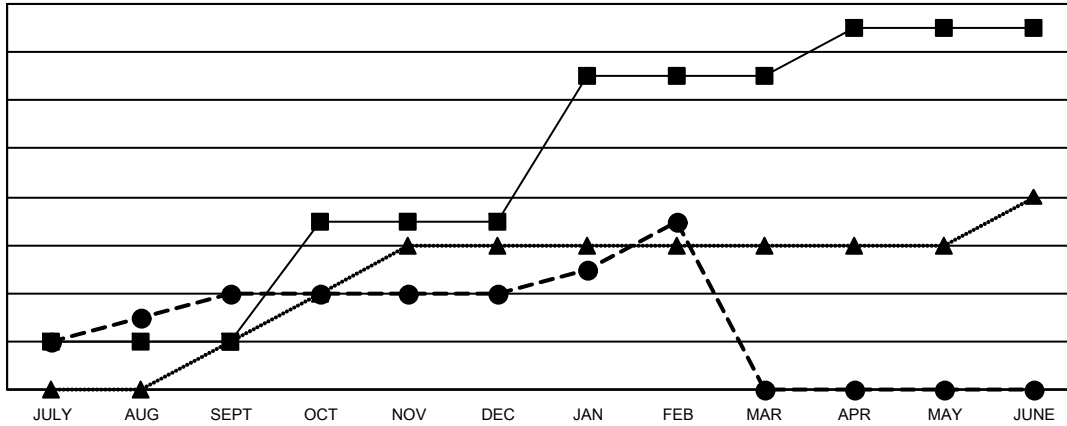
Multiple District A

LOCATION: ONTARIO

Clubs			
RESULTS FOR 2022-2023			
QUARTER	NEW CLUB GOAL	NEW CLUBS	DROPPED CLUBS
JULY/AUG/SEPT	2	4	3
OCT/NOV/DEC	5	0	6
JAN/FEB/MAR	6	3	1
APR/MAY/JUNE	2	0	0

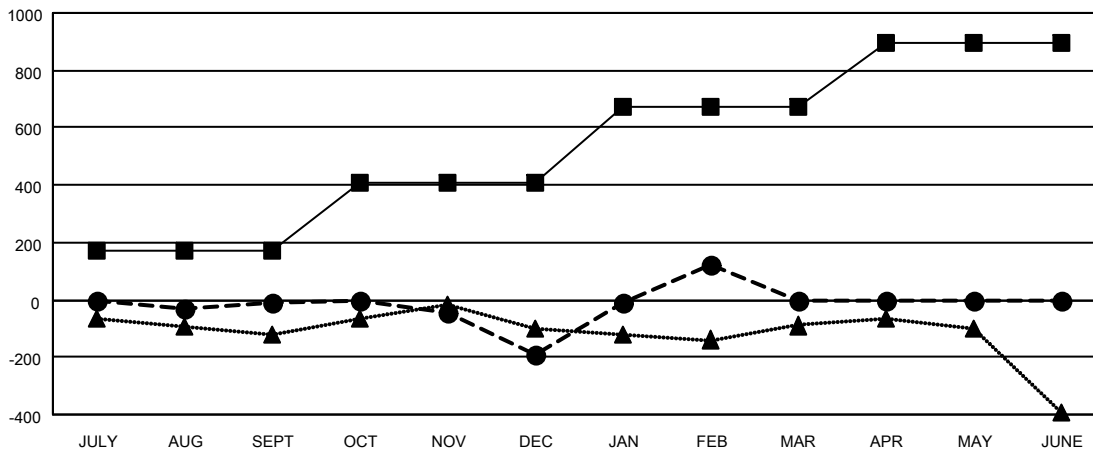
Members			
RESULTS FOR 2022-2023			
QUARTER	MEMBER GROWTH NET GOAL	MEMBER GROWTH ACTUAL	DROPPED MEMBERS ACTUAL (including transfers)
JULY/AUG/SEPT	170	372	331
OCT/NOV/DEC	240	479	605
JAN/FEB/MAR	260	547	191
APR/MAY/JUNE	225	0	0

GOALS AND ACTUAL NEW CLUBS CUMULATIVE



- - CURRENT YEAR GOALS FOR NEW CLUBS
- - CURRENT YEAR ACTUAL NEW CLUBS
- ▲ - LAST YEAR ACTUAL NEW CLUBS

GOALS AND ACTUAL MEMBERS CUMULATIVE



- - MEMBER GROWTH NET GOAL
- - MEMBER GROWTH ACTUAL
- ▲ - LAST YEAR MEMBERSHIP ACTUAL

DROPPED CLUBS: 10	
DROPPED MEMBERS	
DECEASED	152
CLUB CANCELLED	9
OTHER	966
TOTAL	1,127

307 CLUBS OF 535 ADDED 1 OR MORE NEW MEMBERS

[CLICK HERE FOR CUMULATIVE MEMBERSHIP DATA](#)

GENDER DISTRIBUTION	
MALE	7,955 (64.83%)
FEMALE	4,315 (35.16%)
NON BINARY	0 (0.00%)
PREFER NOT TO ANSWER	1 (0.01%)
TOTAL FAMILY UNIT MEMBERS	2,225
FAMILY MEMBERS PAYING HALF DUES	1,151